

IT Skills Development

E-bulletin

IT Skills Pathway autumn user groups

Throughout September we have held the autumn round of IT Skills user groups.

For this round we invited the Training Quality Improvement (TQI) team to join us to provide updates and a workshop about 'Why your training matters'.

As usual we scheduled dates in across the country and allowed people to attend which ever location was easiest for them. Overall we had a good number of attendees and received lots of useful feedback from centres. Suggestions are always welcome and we've had some great ones at the user groups. In fact, some of the suggestions for additions/changes to the tracking system have already been agreed for inclusion.

The slides from the groups will be sent out separately to this bulletin for those who were unable to attend.

October IT Skills Pathway Tracking System webinar

The October IT Skills Pathway Tracking System webinar will be held on Monday 21 October, 10:00 – 12:00. If you would like to attend please contact us by email (it.skills@hscic.gov.uk) and we'll book you in. We will send the dial in details out to those booked on about a week before each session.

If you would like to attend a webinar but are unavailable on this date please let us know and we'll look into adding another date into the diary.

Please also contact us by email (it.skills@hscic.gov.uk) if you are interested in these sessions but are not yet set up as a centre.

Assessment testers wanted



We're steadily making our way through the level 2 and 3 assessment testing schedule with Word 2007 & 2010 and Excel 2010 level 2 assessments now available.



There's plenty more to test in the coming months so if you would like to help please let us know by email (it.skills@hscic.gov.uk).

IT SKILLS PATHWAY

LEVEL THREE
LEVEL TWO
LEVEL ONE
ENTRY





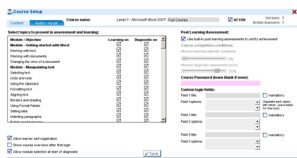
This month, Maude has received a query from a centre.



“Hi Maude, it’s Graeme from Essex. I’ve heard there are new menus on the Tracking System. Can you explain them please?”



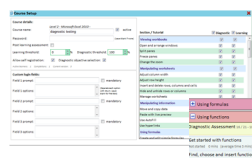
“Hi Graeme, glad you asked. There are a few things to note about the menus so here goes.....”



Example Entry & Level 1 menus

Use	Units	Length	Disruptive score	Starts	Learnline Assessment
Working with cells	10	10	10	10	10
Working with formulas	20	20	20	20	20
Working with charts	20	20	20	20	20
Working with printing	20	20	20	20	20
View progress summary & print certificates	20	20	20	20	20

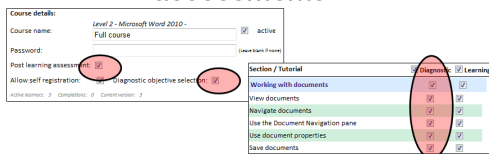
“Firstly, there are two types of menus currently. One for Entry Level and Level 1 and a different one for Levels 2 & 3.”



Example Level 2/3 menus

“In time, we’ll be working to make all the menus look like the Level 2 & 3 ones....”

“The Level 2 modules that currently have assessments will also have additional boxes relating to the diagnostics and post learning assessments”



“I’m still a bit confused – can I get more help?”

“Of course you can Graeme. We run webinars specifically to deal with this subject so I’d recommend booking in on one. Details can be found elsewhere in this bulletin.”



More tips from Maude next month

New menus webinar

The October new menus webinar will be held on Thursday 10 October, 14:00 – 14:30.

If you'd like to find out more about the new menus then please book a place by emailing it.skills@hscic.gov.uk

Level 2 Excel 2010 assessments available

The diagnostic and post learning assessments for Level 2 Excel 2010 have now been released.

You will notice the addition of these options when creating your customised courses.

The screenshot shows the 'Course Setup' window. On the left, under 'Course details', the 'Post learning assessment' checkbox is highlighted with a red box. Below it, the 'Learning threshold' is set to 100% and the 'Diagnostic threshold' is set to 0%. On the right, the 'Section / Tutorial' table has a 'Diagnostic' checkbox highlighted with a red box. The table lists various tasks with checkboxes for 'Diagnostic' and 'Learning' assessments.

Section / Tutorial	Diagnostic	Learning
Viewing workbooks	<input type="checkbox"/>	<input checked="" type="checkbox"/>
Open and arrange windows	<input type="checkbox"/>	<input checked="" type="checkbox"/>
Split panes	<input type="checkbox"/>	<input checked="" type="checkbox"/>
Freeze panes	<input type="checkbox"/>	<input checked="" type="checkbox"/>
Change the zoom	<input type="checkbox"/>	<input checked="" type="checkbox"/>
Manipulating worksheets	<input type="checkbox"/>	<input checked="" type="checkbox"/>
Adjust column width	<input type="checkbox"/>	<input checked="" type="checkbox"/>
Adjust row height	<input type="checkbox"/>	<input checked="" type="checkbox"/>

N.B Please remember to create new courses when making use of the new assessments as you could skew your statistics if you edit the existing courses to include assessments.

There is more detail within the context help tool about this.

Top Pathway centres:

- 1 University of Manchester
- 2 5 Boroughs Partnership NHS Trust
- 3 NHS England
- 4 Sheffield Teaching Hospitals NHS FT
- 5 University of Portsmouth
- 6 University of Liverpool
- 7 Lewisham and Greenwich NHS Trust
- 8 Birmingham Community Healthcare Trust
- 9 South London & Maudsley NHS FT
- 10 Northumbria Healthcare NHS Trust

Pathway elearning:

No. of learners in August 2013 2322
Total pathway learners 89156 (since release 4)



Contact us:

Email: it.skills@hscic.gov.uk
Web: www.itskills.nhs.uk