

IT Skills Development E-bulletin

MOST award for top centre 2012/13

Congratulations to Leicester HIS on becoming the top NHS MOST centre for 2012/13.



After coming close to achieving the award in the past, it was somehow fitting that the centre with the most overall exams since the beginning of the programme should achieve the national award in the final year.

Congratulations too, to the following regional winners:-

- North East - South Tees Hospitals NHS Trust
- North West - Blackpool Teaching Hospitals NHS Foundation Trust
- East of England - Princess Alexandra Hospital NHS Trust

November IT Skills Pathway Tracking System Webinar

The November IT Skills Pathway Tracking System webinar will be held on Thursday 21, 10:00 – 12:00. If you would like to attend please contact us by email (it.skills@hscic.gov.uk) and we'll book you in. We will send the dial in details out to those booked on about a week before each session.

If you would like to attend a webinar but are unavailable on this date please let us know and we'll look into adding another date into the diary.

Please also contact us by email (it.skills@hscic.gov.uk) if you are interested in these sessions but are not yet set up as a centre.



IT SKILLS PATHWAY

LEVEL THREE

LEVEL TWO

LEVEL ONE

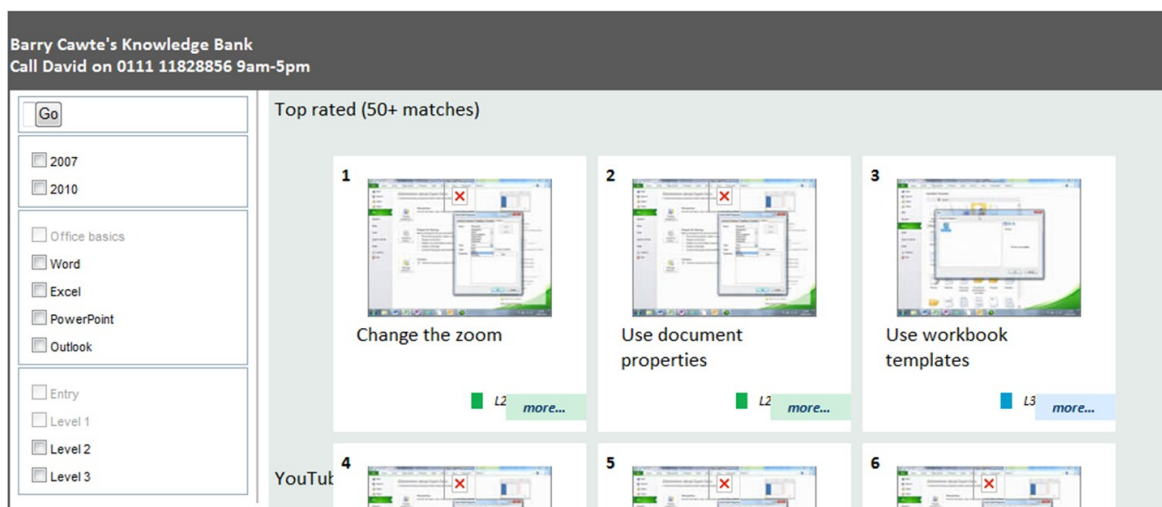
ENTRY

Future development—IT Skills Pathway Knowledge Bank

At the recent round of User Groups we told you about a future development that is being worked on called the 'IT Skills Pathway Knowledge Bank'.

The Knowledge Bank will include searchable resources, videos, learning content and external links. The idea being that people can search for help on a specific topic without having to undertake a full elearning course. The Knowledge Bank isn't intended to supersede our current provision but to compliment it allowing centres to deliver just in time learning to those who need it.

More information will be available in future communications.



Top Pathway centres:

- | | |
|---|--|
| 1 University of Manchester | 6 Imperial College Healthcare NHS Trust |
| 2 University of Portsmouth | 7 Gloucestershire Hospitals NHS Foundation Trust |
| 3 Teesside University | 8 Wirral Community NHS Trust |
| 4 University of Liverpool | 9 University of Northampton |
| 5 Sheffield Teaching Hospitals NHS Foundation Trust | 10 Birmingham Community Healthcare Trust |

Pathway elearning:

No. of learners in September 2013	2857
Total pathway learners (since release 4)	92013

New menus webinars

You may have noticed that there are differences between the elearning menu styles for entry/level 1 and level 2/3 materials.

To explain the differences we are holding some new menus webinars. The November one will be held on Tuesday 19, 10:00 – 10:30. If you'd like to find out more about the new menus then please book a place by emailing it.skills@hscic.gov.uk.



Contact us:

Email: it.skills@hscic.gov.uk
Web: www.itskills.nhs.uk