

IT Skills Development E-bulletin



Level 3 (Expert) assessments available

We are very pleased to inform you that the level 3 Word assessments are now available for use.

This means there is now a full pathway for Microsoft Word learning from beginner right through to advanced.

The diagnostic and post learning assessments for level 2 Outlook 2010 are also now available on the tracking system in the course setup tab.

As with all new assessments we strongly advise you create new courses instead of amending your existing courses to include these new assessments.

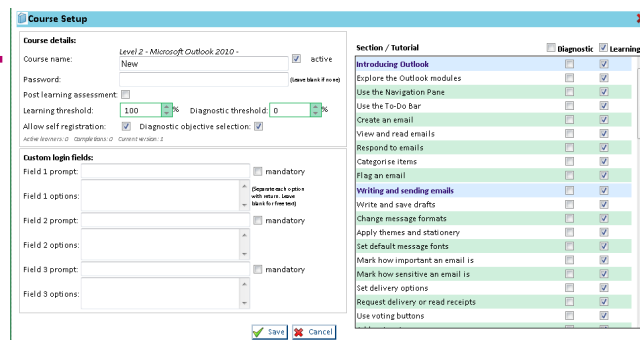
If you have a query about this or anything else please send us an email and we'd be happy help, it.skills@hscic.gov.uk.

New menus webinar

We continue to run webinars to show the layout of the new menus that you'll see in the level 2 and 3 materials.

The next session will be
Wednesday 12 March, 11:00 –

11:30. If you'd like to find out more about the new menus then please book a place by emailing it.skills@hscic.gov.uk



Full annual survey results available to download

If you'd like to peruse the full annual survey results they can now be downloaded from the NHS Networks site, <http://www.networks.nhs.uk/nhs-networks/nhs-it-training-professionals>.

N.B Please remember that you will need to be registered to access, have a look at Ask Maude on page 2 for more information.

IT SKILLS PATHWAY

LEVEL THREE

LEVEL TWO

LEVEL ONE

ENTRY



This month, Maude has received a query from a centre.



“Hi Maude. I've been looking for a way to share some of our team's lesson plans and other bits and pieces with other centres.....

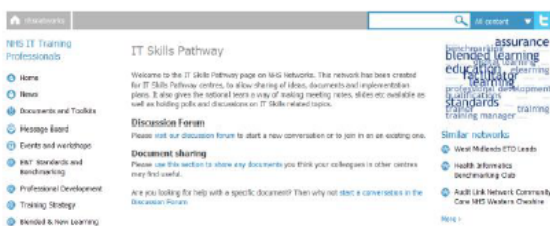


“.....but I can't find anywhere suitable. Can you suggest anything?”

“Hi. Thanks for your query. You can use the IT Skills Pathway section on NHS Networks....”



“... as well as being able to upload, share and download documents you can also use this group to start or join in on discussions.”



“The pathway section sits within the NHS IT Training Professionals group, you'll need to be registered first to join in.”



“Sounds great Maude. Where do I find it?”



“The URL is <http://www.networks.nhs.uk/nhs-networks/nhs-it-training-professionals>”

“Great, thanks Maude. I'll get set up asap so I can start sharing with other IT Skills Pathway centres and the wider NHS IT Training community”



Top Pathway centres:

- | | |
|---------------------------------------|---|
| 1 University of Manchester | 6 Bridgewater Community Healthcare Trust |
| 2 NHS England | 7 Birmingham Community Healthcare NHS Trust |
| 3 Wirral Community NHS Trust | 8 Norfolk and Suffolk FT |
| 4 Teesside University | 9 Imperial College Healthcare NHS Trust |
| 5 Sheffield Teaching Hospitals NHS FT | 10 Gloucestershire Hospitals NHS FT |

Pathway elearning:

No. of learners in December 2014 1048

Total pathway learners (since release 4) 97775

NHS Networks – What would you like to see?



As you'll have seen earlier in the bulletin, Maude has been giving advice about centre sharing in NHS Networks.

There is other functionality available within NHS Networks so we wanted to find out if there is anything else you'd like to see it used for? Why not register onto the IT Skills Pathway section and take a look.

Please send any suggestions to it.skills@hscic.gov.uk

February IT Skills Pathway Tracking System Webinar

The February IT Skills Pathway Tracking System webinar will be held on Thursday 13 February. If you would like to attend please contact us by email (it.skills@hscic.gov.uk) and we'll book you in. We will send the dial in details out to those booked on about a week before each session.

If you would like to attend a webinar but are unavailable on this date please let us know and we'll look into adding another date into the diary.

Please also contact us by email (it.skills@hscic.gov.uk) if you are interested in these sessions but are not yet set up as a centre.



Contact us:

Email: it.skills@hscic.gov.uk
Web: www.itskills.nhs.uk